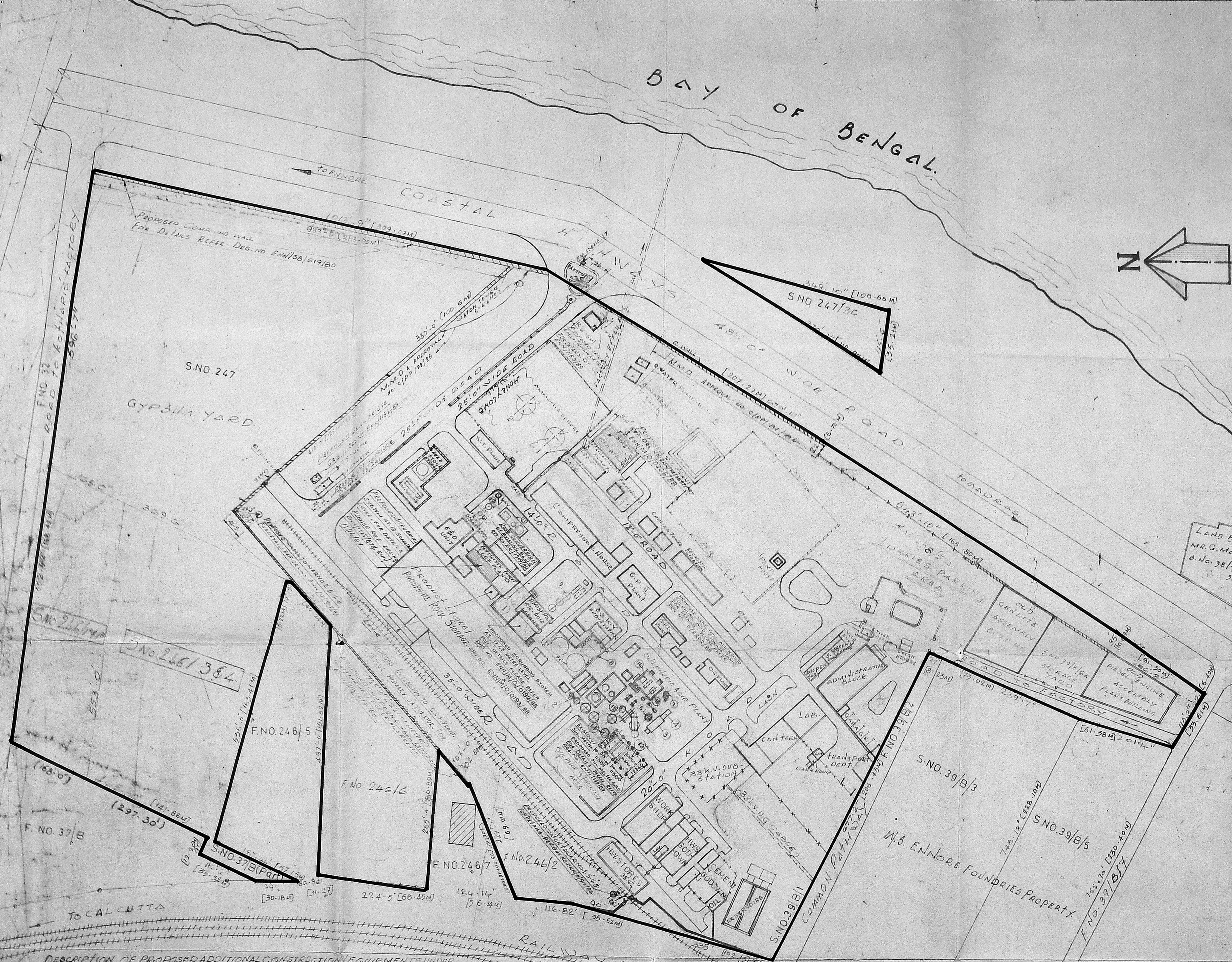


Survey Plan

SURVEY	Extent	IN ACRES	IN HECTARES
G 20088/89			
247-1A			
247-2A		34.33	13.90
247-3A			
247-3C			
39-B1		1.37	0.55
39-B-6A		1.44	0.58
38-5A		1.95	0.78
37-B(PART)		0.15	0.06
246-1A		1.01	0.41
246-1B		1.01	0.41
246-2		0.77	0.31
246-3		0.77	0.31
246-4		0.77	0.31
246-5		0.77	0.31
246-6		0.77	0.31
246-7		0.77	0.31
246-8		0.77	0.31
246-9		0.77	0.31
246-10		0.77	0.31
246-11		0.77	0.31
246-12		0.77	0.31
246-13		0.77	0.31
246-14		0.77	0.31
246-15		0.77	0.31
246-16		0.77	0.31
246-17		0.77	0.31
246-18		0.77	0.31
246-19		0.77	0.31
246-20		0.77	0.31
246-21		0.77	0.31
246-22		0.77	0.31
246-23		0.77	0.31
246-24		0.77	0.31
246-25		0.77	0.31
246-26		0.77	0.31
246-27		0.77	0.31
246-28		0.77	0.31
246-29		0.77	0.31
246-30		0.77	0.31
246-31		0.77	0.31
246-32		0.77	0.31
246-33		0.77	0.31
246-34		0.77	0.31
246-35		0.77	0.31
246-36		0.77	0.31
246-37		0.77	0.31
246-38		0.77	0.31
246-39		0.77	0.31
246-40		0.77	0.31
246-41		0.77	0.31
246-42		0.77	0.31
246-43		0.77	0.31
246-44		0.77	0.31
246-45		0.77	0.31
246-46		0.77	0.31
246-47		0.77	0.31
246-48		0.77	0.31
246-49		0.77	0.31
246-50		0.77	0.31

APPROVED  
 SUBJECT TO THE CONDITIONS IN  
 THIS OFFICE LETTER  
 No. C2/20088/89 Date: 11/90  
 FOR MEMBER SECRETARY  
 MADRAS METROPOLITAN  
 DEVELOPMENT AUTHORITY  
 MADRAS 600003



DESCRIPTION OF PROPOSED ADDITIONAL CONSTRUCTION EQUIPMENTS UNDER PHASE I.

REF. NO.	DESCRIPTION OF BLDG./EQUIPMENT	NO. OF MOTOR	H.P. EACH MOTOR	TOTAL H.P.
1	EXTENSION TO P.A.P. BUILDING FOR ATTACH TANK NO. 4			
	SLURRY PUMP	2	30	60
	SCRUBBER FAN	1	20	20
	AGITATOR	4	15	60
	EXPORT PUMP	2	7.5	15
	SCRUBBER PUMP	1	5	5
	VACUUM PUMP	2	100	200
	D.M. WATER PUMP	2	5	10
	CAKE BLOWER	1	3	3
	FOR F.R.T.			
	F.R.T. PUMP	3	5	15
	DO AGITATOR	3	3	9
	FOR BELT FILTER			
	DRUM UNIT	1	3	3
	GRAND TOTAL	22	-	422

REF. NO.	DESCRIPTION OF BLDG./EQUIPMENT	NO. OF MOTOR	H.P. EACH MOTOR	TOTAL H.P.
2	B/F	22	-	422
3	FINAL ABSORPTION TOWER WITH PUMP BOOT FOR ACID CIRCULATION PUMP	1	50	50
4	COMBUSTION FURNACE FUEL OIL PUMP	1	5	5
5	WASTE HEAT BOILER	-	-	-
6	HOT GAS FILTER	-	-	-
7	SUPER HEATER	-	-	-
8	FURNACE OIL DAY TANK FOR FUEL OIL PUMP	1	3	3
	GRAND TOTAL	25	-	480

REF. NO.	DESCRIPTION OF BLDG./EQUIPMENT	NO. OF MOTOR	H.P. EACH MOTOR	TOTAL H.P.
8	ADDL. SULPHURIC ACID STORAGE TANK NO. 2	-	-	-
9	100L. PHOSPHORIC ACID STORAGE TANK NO. 3 AGITATOR MOTOR	1	30	30
11	EFFLUENT FRESHENING PLANT	-	-	-
12	AMM. CARB. STORAGE TANK	-	-	-
13	ADDL. SULPHUR NITRILE SHED	2	20	40
14	FINAL HEAT EXCHANGER	-	-	-
15	INTERMEDIATE HEATER	-	-	-
16	DO. E. S. SHED	-	-	-
17	ACID COOLER	-	-	-
18	WATER TOWER	-	-	-

NOTE:  
 1. E.I.D. PARRY BRANDORINE BRUSH TALS  
 2. PROPOSAL FOR SHANTHUS  
 3. FOR P.A.P. BLDG. REF. DRG. NO. ENN/SP/1436/86  
 4. NO. POSE FOR WATER TOWER OLD SHANTHUS - E

R. Madhavan  
 R. MADHAVAN, L.C.E.,  
 LICENCED SURVEYOR,  
 MUNICIPAL TOWNSHIP,  
 PUTHIVAKKAM, MADRAS-67.

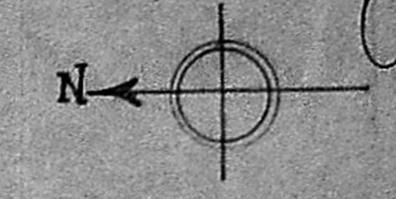
**E.I.D. PARRY (I) LTD.**  
 COMPOUND FERTILISER FACTORY - ENNORE MADRAS-67

DRAWN [Signature]  
 TRACED [Signature]  
 CHECKED [Signature]  
 CIVIL ENG. [Signature]  
 APPROVED [Signature]  
 DATE: 11/90  
 SCALE: 1/1000 DRG. NO. ENN/112/B/185

OCCUPIER  
 For E.I.D. PARRY (INDIA) LTD.  
 R. S. CHIDAMBARAM  
 General Manager



51 Sewerage Plan  
 C2/2008/87  
 13/8/90



Planning Permit No. C/PA/274 BE/50  
**APPROVED**  
 SUBJECT TO THE CONDITIONS IN THIS OFFICE LETTER.  
 No. C2/2008/87 Date 7.11.90  
 FOR MEMBER SECRETARY  
 MADRAS METROPOLITAN  
 DEVELOPMENT AUTHORITY  
 MADRAS-600038

**REMARKS**  
**VESSELS**  
 FLT SAND BED FILTERS.  
 AMT ACID MEASURING TANKS.  
 SAC STRONG ACID CATION.  
 WBA WEAK BASE ANION.  
 DG DEGASSER TOWER.  
 SBA STRONG BASE ANION.  
 CDT CAUSTIC MEASURING TANK.

**STORAGE TANKS**

FWT	FILTERED WATER.	40 M <sup>3</sup> (2.5x7)
DGWT	DEGASSED WATER.	20 M <sup>3</sup> (2.5x4)
CT	CAUSTIC LYE STORAGE.	20 M <sup>3</sup>
AT	ACID STORAGE. (H.L)	20 M <sup>3</sup>
DMWT	DM WATER.	38 M <sup>3</sup> (2.7x6-4)
ADWT	ACID DILUTION WATER.	20 M <sup>3</sup> (2.7x3)
DWT	DRINKING WATER.	
	CHLORINATOR.	18 M <sup>3</sup> (2x6)
	PROPOSED.	

**PUMPS**

		CAPACITY	HEAD	SPEED	H.P. EACH
		M <sup>3</sup> /HR	MTR	RPM	
P1	DEGASSED WATER PUMP.	2 NOS - 37.5	40	2800	12.5
P2	CAUSTIC UNLOADING PUMP.	2 NOS - 10.0	15	1450	2.0
P3	ACID UNLOADING PUMP.	2 NOS - 10.0	10	2800	1.0
P4	DM WATER PUMP.	2 NOS - 20.0	40	2800	10.0
P5	ACID DILUTION WATER PUMP.	2 NOS - 20.0	40	2800	10.0
P7	NON FILTERED RAW WATER PUMP.	2 NOS - 40.0	40	2800	12.5
P8	DEGASSER BLOWER.	2 NOS - 16.0	30 mm	1500	0.75
			W.C.		

**NOTE:**

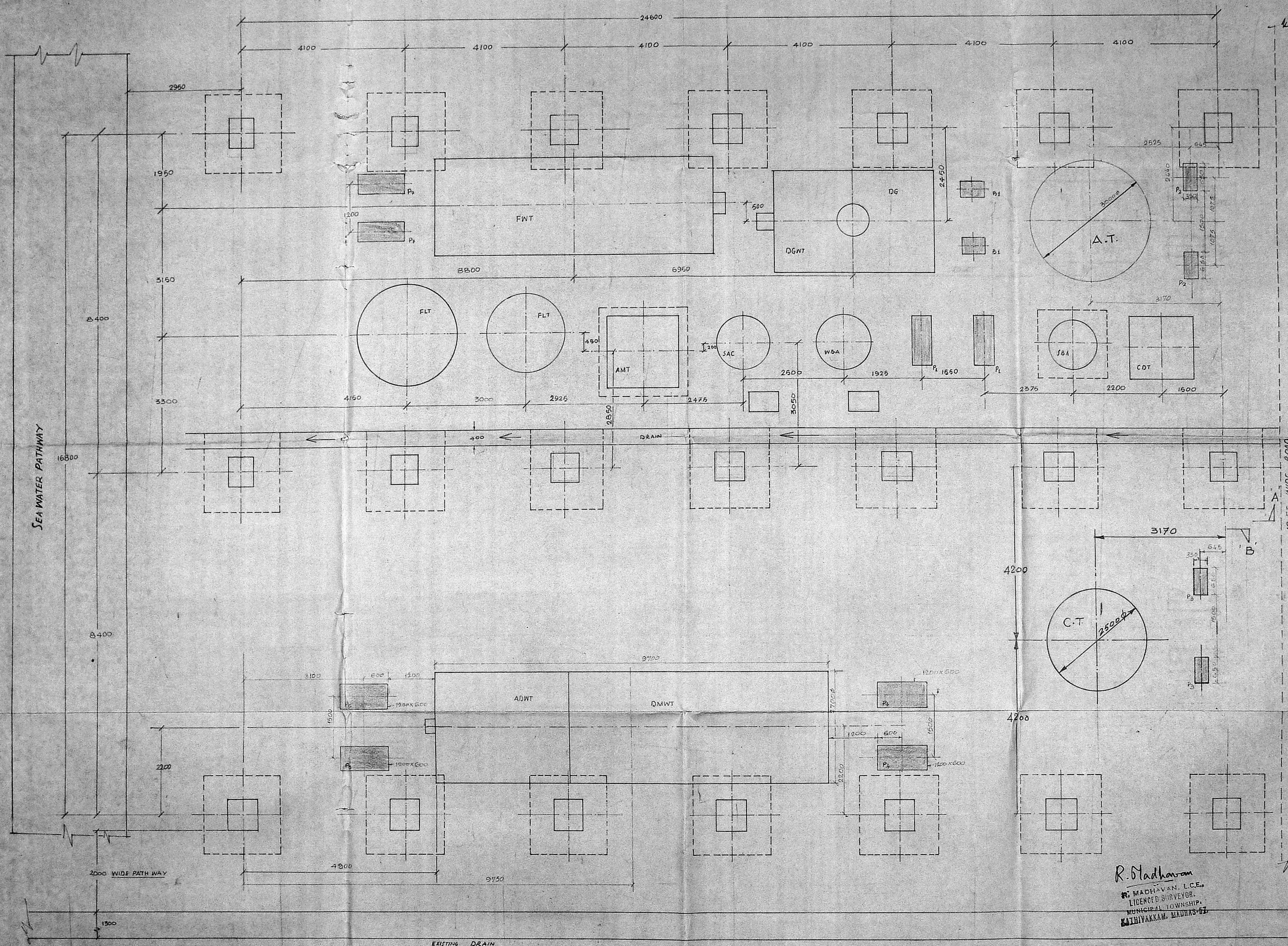
1. FOR ELEVATION, REF. DRG. NO. ENN/M/O/0206/BB
2. C.C. PLINTHS FOR FUTURE STANCHIONS SHOWN THUS. [Symbol]
3. PROPOSED H.P. INSTALLATIONS SHOWN THUS. [Symbol]
4. PROPOSED VESSELS & EQUIPMENTS ETC. SHOWN THUS. [Symbol]

**OCCUPIER**  
 For E.I.D. PARRY (INDIA) LTD.  
 E. S. CHIDAMBARAM  
 General Manager

**E.I.D.-PARRY (I) LIMITED**  
 COMPOUND FERTILISER FACTORY ENNORE - 57

DRAWN	g. gnanendraselvan	TITLE	PROPOSED WTP LAYOUT
TRACED	21/11/90		
CHECKED			
APPROVED			
DATE	29-1-87		
SCALE	1:50		

R. Madhanam  
 R. MADHAVAN, L.C.E.,  
 LICENSED SURVEYOR,  
 MUNICIPAL TOWNSHIP,  
 KATHIVAKKAM, MADRAS-67

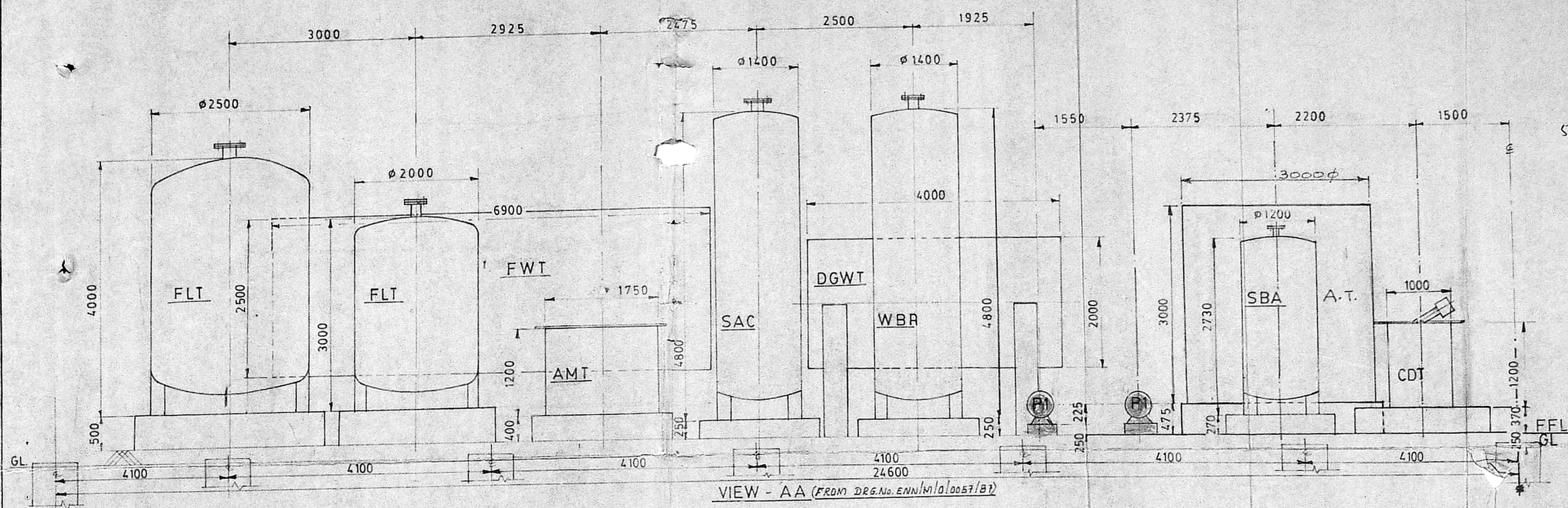


EXISTING DRAIN

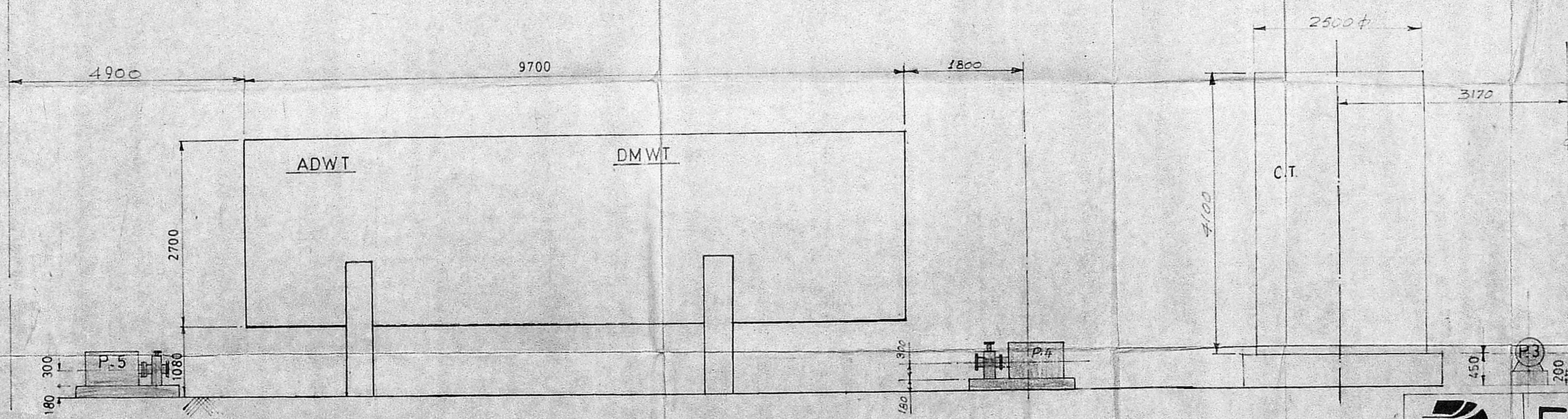


Southern Plan  
 C2/20082/89  
 13/8/90

Planning Permit No. C/PP/274.CE/90  
**APPROVED**  
 SUBJECT TO THE CONDITIONS IN  
 THIS OFFICE LETTER  
 No. C2/20082/89 Date 7-11-90  
 FOR MEMBER SECRETARY  
 MADRAS MUNICIPALITY  
 DEVELOPMENT



VIEW - AA (FROM DRG. No. ENN/M/O/0057/B7)



VIEW - B-B (FROM DRG. No. ENN/M/O/0057)

NOTES:  
 1. ALL DIMENSIONS ARE IN MM UNLESS OTHERWISE STATED  
 2. FOR EQP.T. DEFINITIONS AND LAYOUT REF DRG. No. ENN/M/O/0057/B7

**OCCUPIER**  
 For EID PARRY (INDIA) LTD.  
 T. S. CHIDAMBARAM  
 General Manager

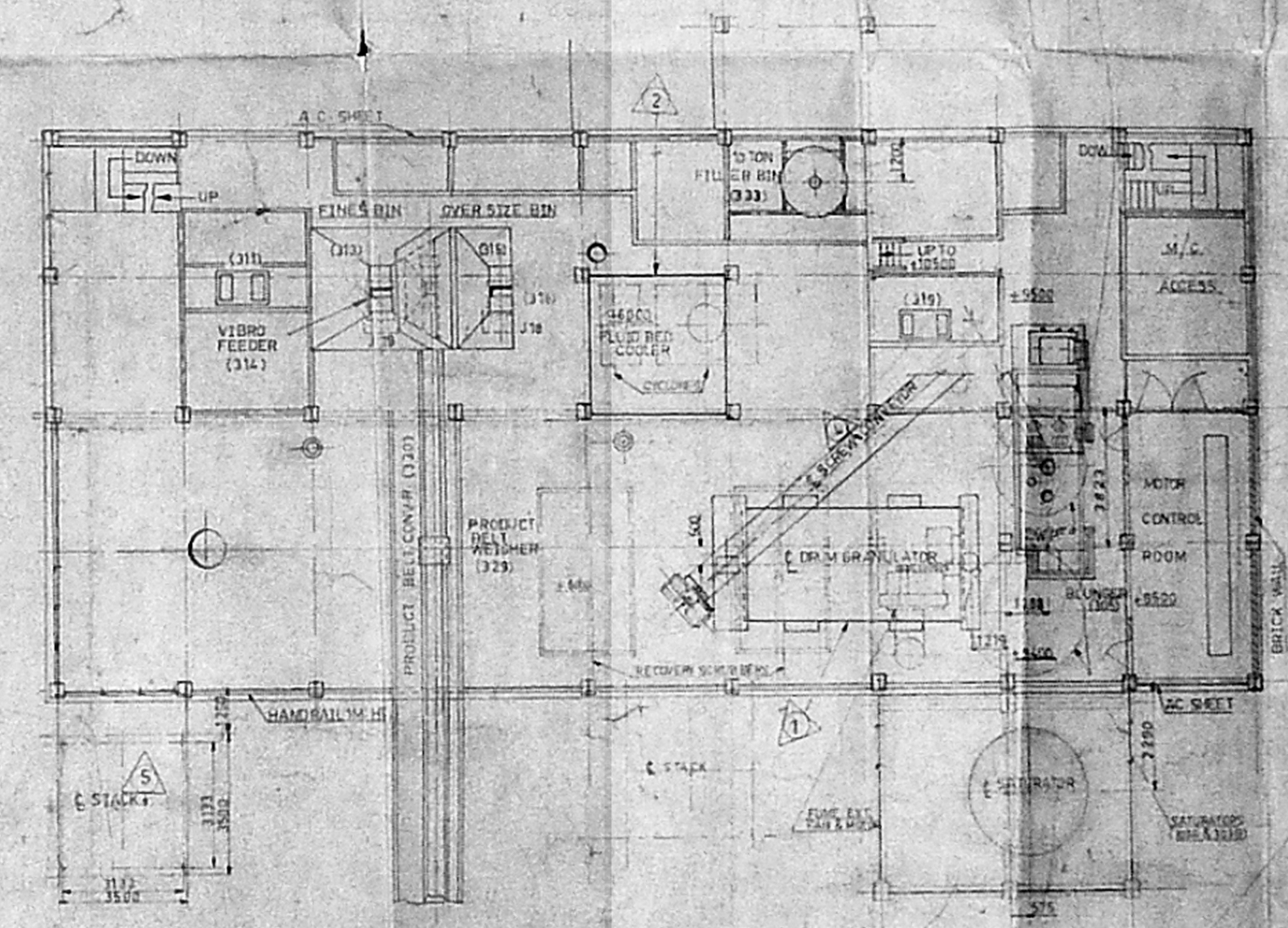
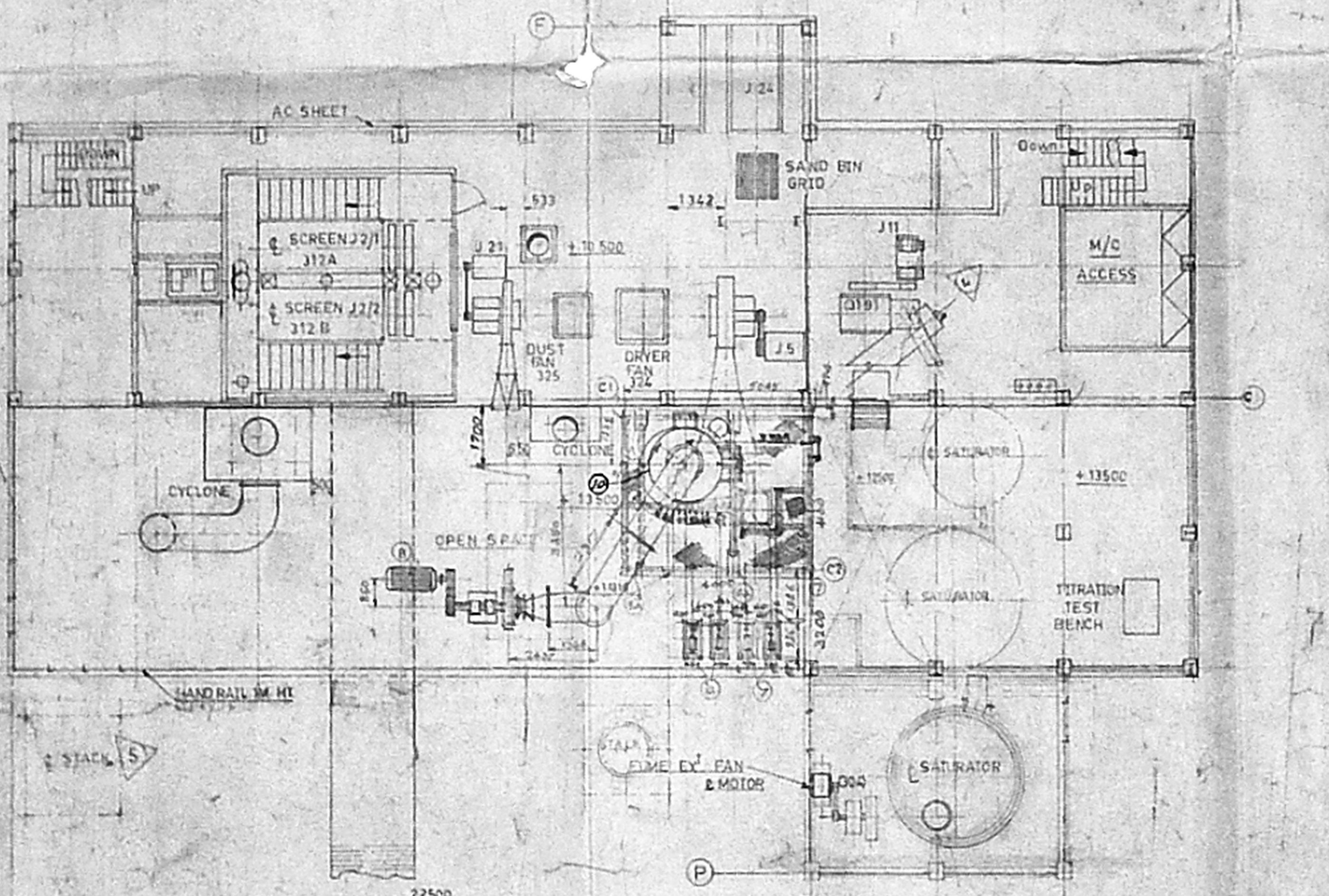
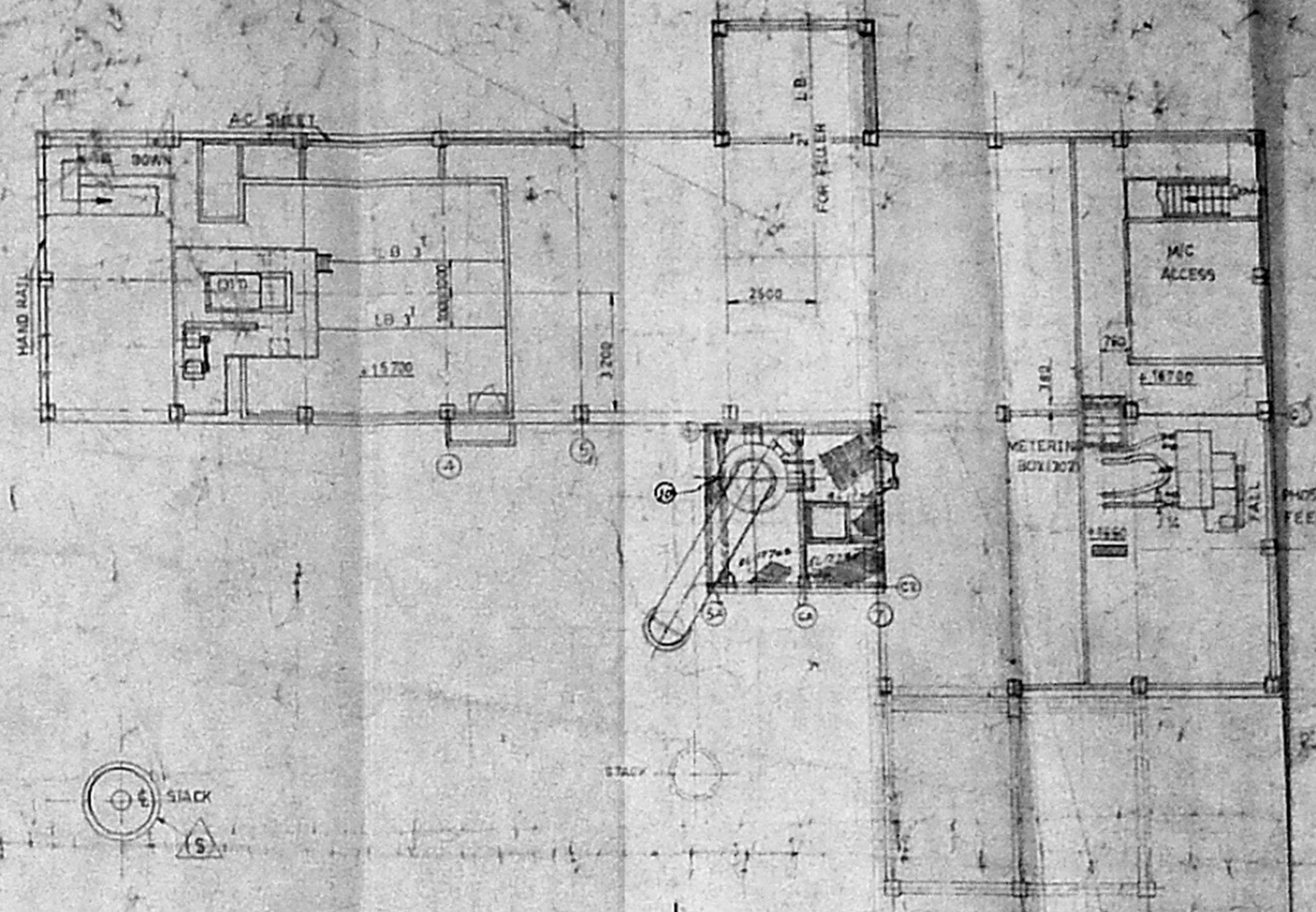
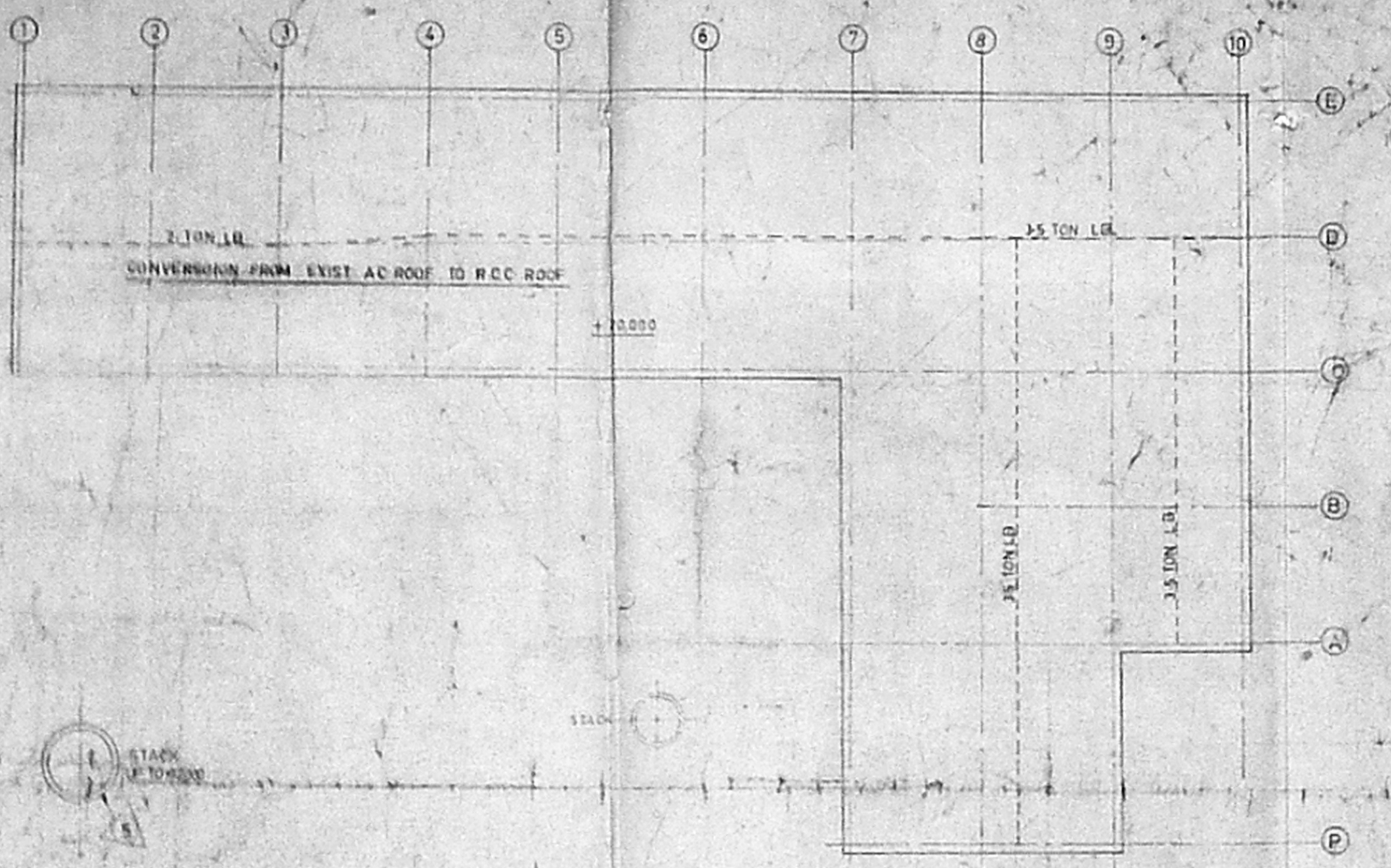
R. Madhavan

R. MACHAVAN, L.C.E.  
 LICENSED SURVEYOR,  
 MUNICIPAL TOWNSHIP,  
 MATTIVAKKAM, MADRAS-67

**EID PARRY (I) LTD**  
 COMPOUND FERTILIZER FACTORY, ENNORE, MADRAS-57

DETAILED BY: DRAFTECH DESIGNS & MARKETING SERVICES MADRAS-116	TITLE: SECTION DETAIL FOR WTP.
DRAWN: [Signature]	DRG. No. ENN/M/O/0206/88
CHECKED: [Signature]	DATE: 6.10.88.
APPROVED: [Signature]	
SCALE: 1:50	





**DETAILS OF EQUIPMENT TO BE INSTALLED**

NO.	DESCRIPTION OF EQUIPMENT	QUANTITY	UNIT	HP
1	DRUM GRANULATOR	1	120	320
2	FLUID BED COOLER	1	120	150
3	THE NEUTRALISER PUMPS	2	105	150
4	SCREEN CONVERTER	1	25	25
5	STACK	1	1	1
6	VERTICAL SPRAY DRYER	1	20	10
7	CYCLONE SPRAY DRYER	1	20	10
8	RE. WASH FILTER	1	1	1
9	RECOVER SCRUBBER	1	1	1
10	APPROX. SCRUBBER	1	1	1

**EXISTING SHOWN THIS**

PROP. EXTENSION SHOWN THIS

PROP. MODIFICATION SHOWN THIS

EQUIP. TO BE REMOVED SHOWN THIS

EQUIP. TO BE REMOVED SHOWN THIS

BRICK WORK SHOWN THIS

AC SHEET SHOWN THIS

HAND RAIL SHOWN THIS

SOCCALLY SHOWN THIS

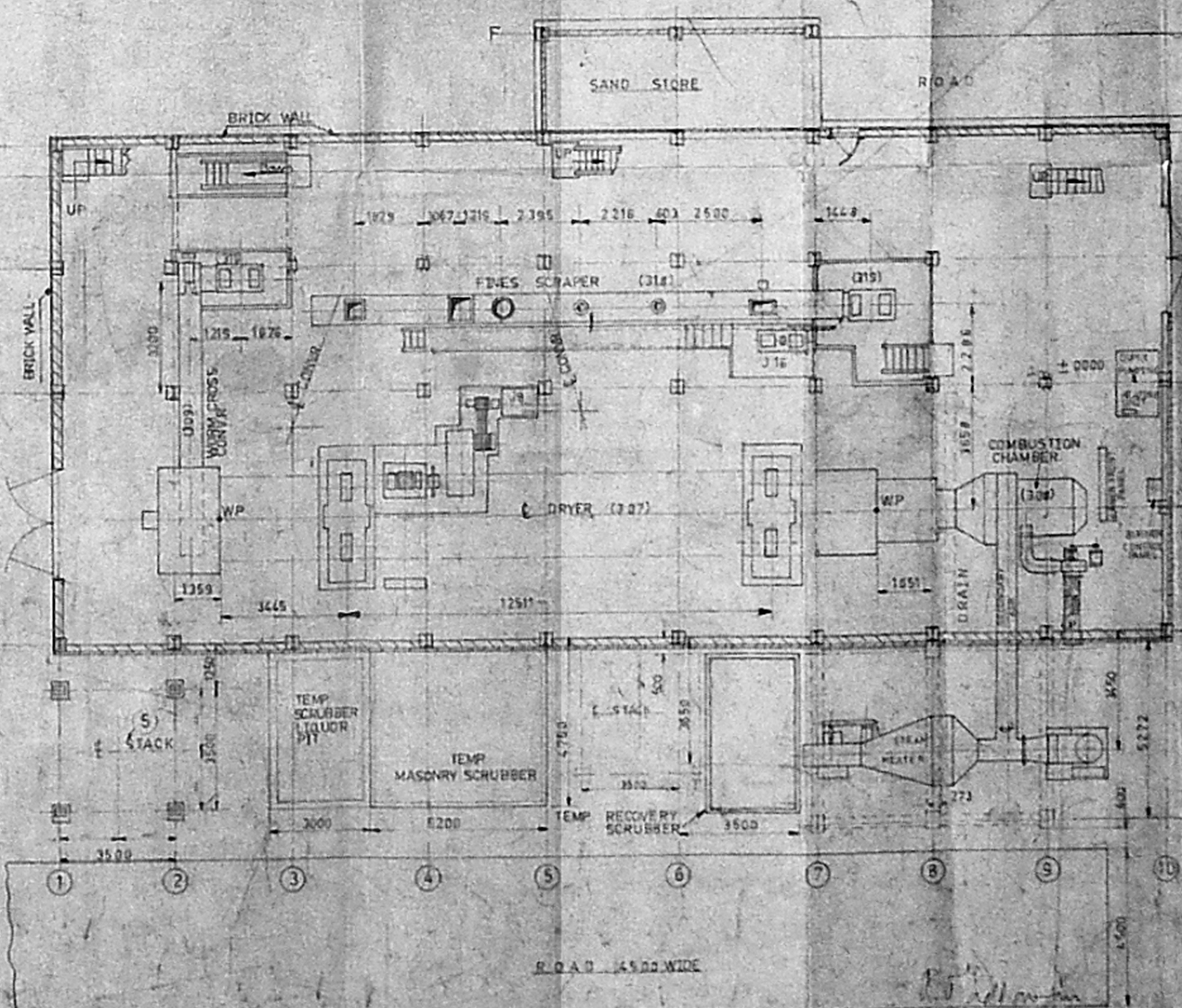
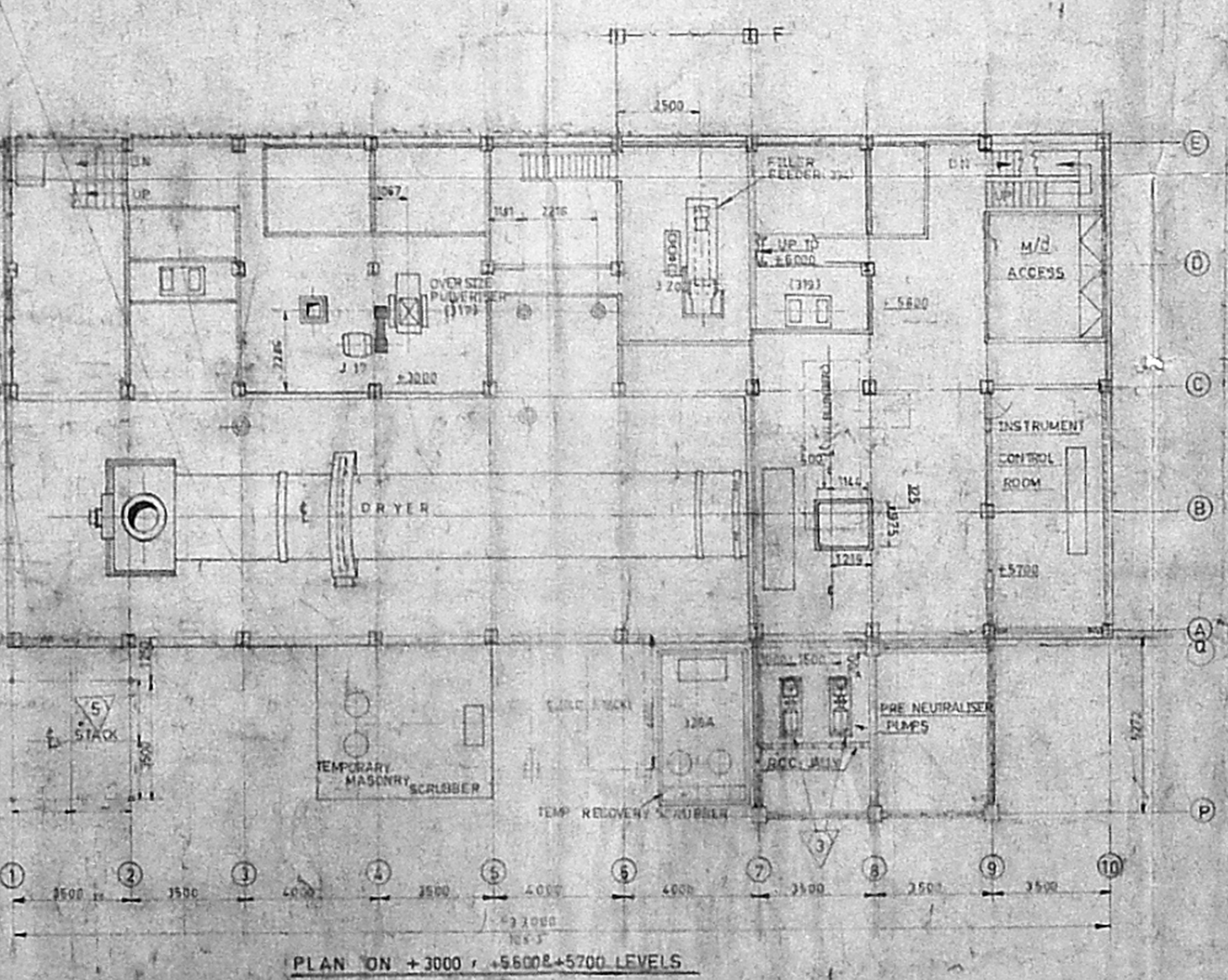
AC SHEET SIDE OF A/D/W/IN/B/O/R/D

AREA (PROP. EXTENSION) - 146 SQ. MTS.

THIS DRAWING IS TO BE READ IN CONJUNCTION WITH DRG No. E.M. 1/25/67

Planned by: Charbonnery  
**APPROVED**  
 AND ALL TO BE COVERED IN  
 10.0.00.00.00  
 G. Charbonnery

OCCUPIER  
 FOR E.I.D. PARRY (INDIA) LTD.  
 CHAIRMAN  
 General Manager



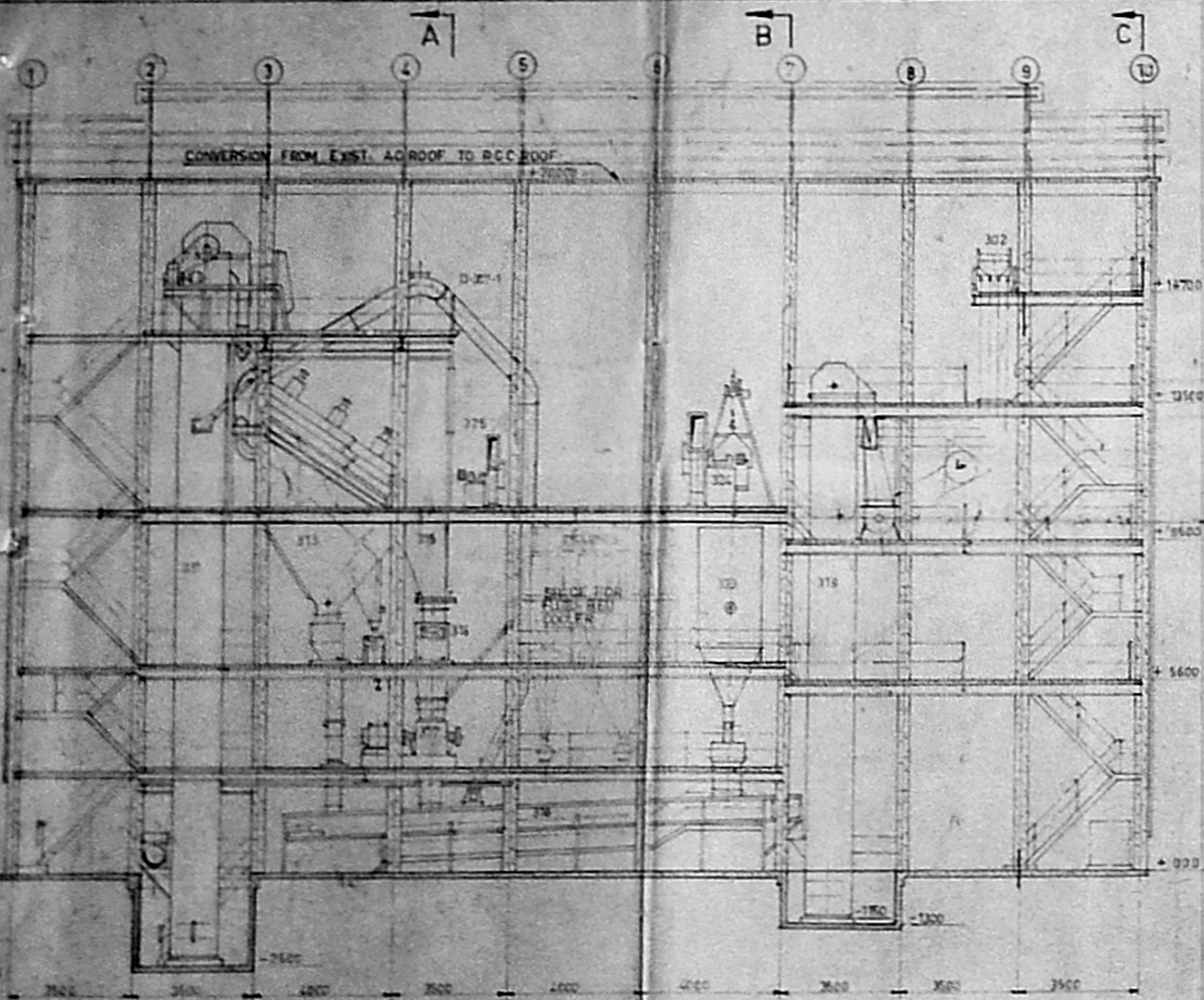
DATE	NAME	
BY	CHKD	
CHKD	TRD	
TRD	APPD	
APPD		
SCALE	1:500	
TOLERANCE		

**E.I.D. PARRY (INDIA) LTD.**  
 CHAIRMAN  
 General Manager

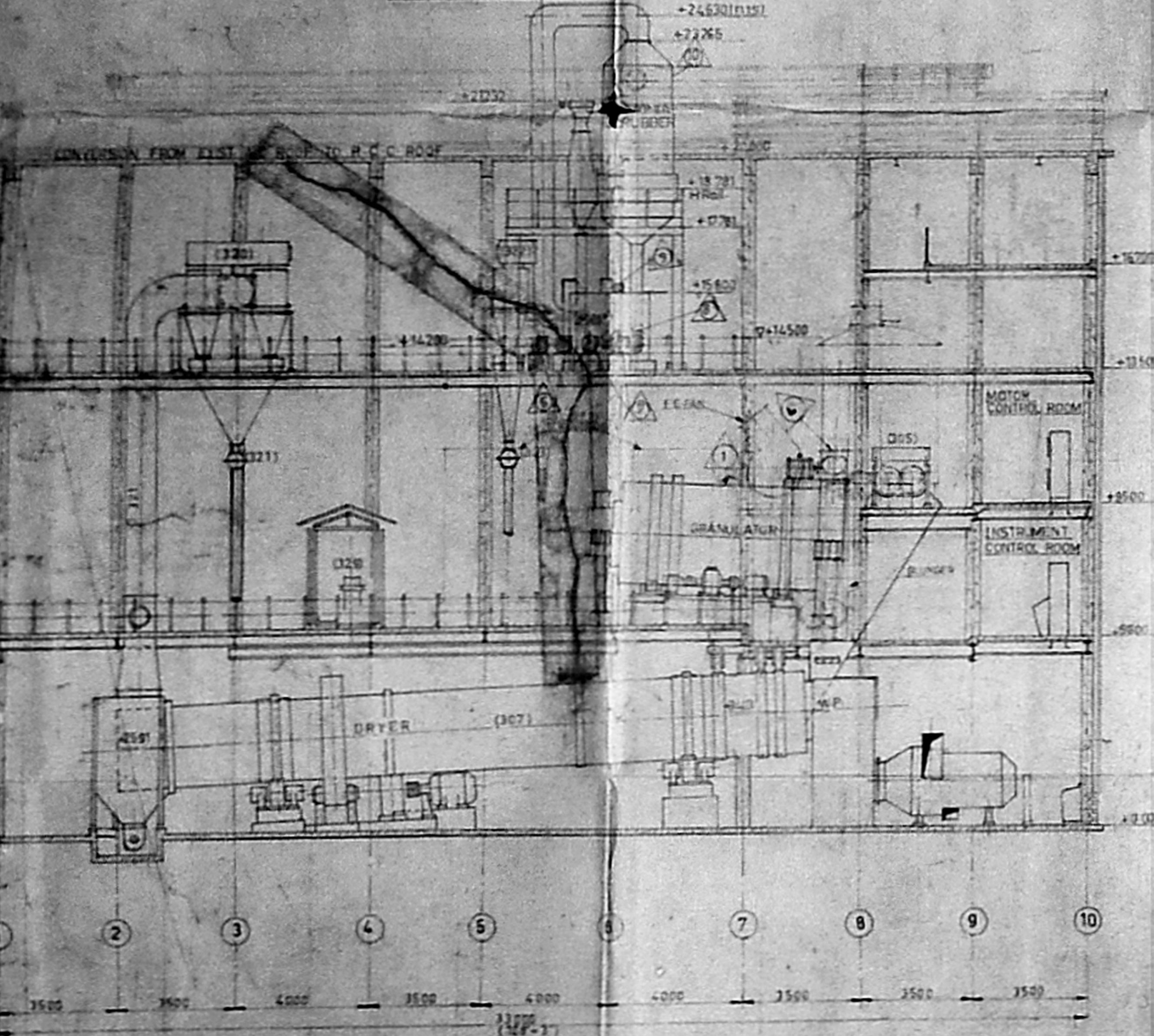
**E.M. 1/25/67**

N. MACHAVANE LEO  
 LICENT. SURVEYOR  
 MUNICIPAL ENGINEER  
 MUMBAI. REG. NO. 122

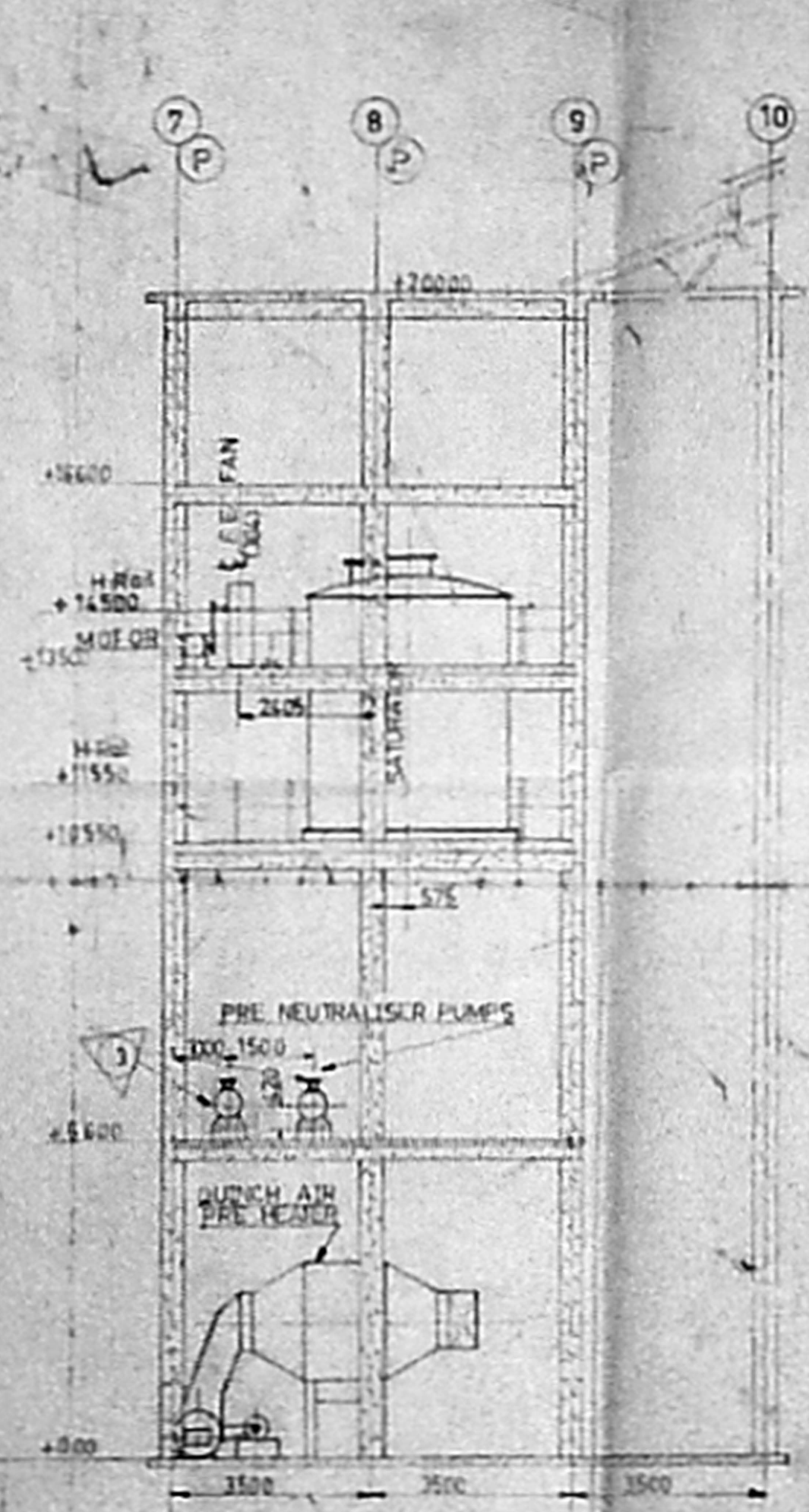




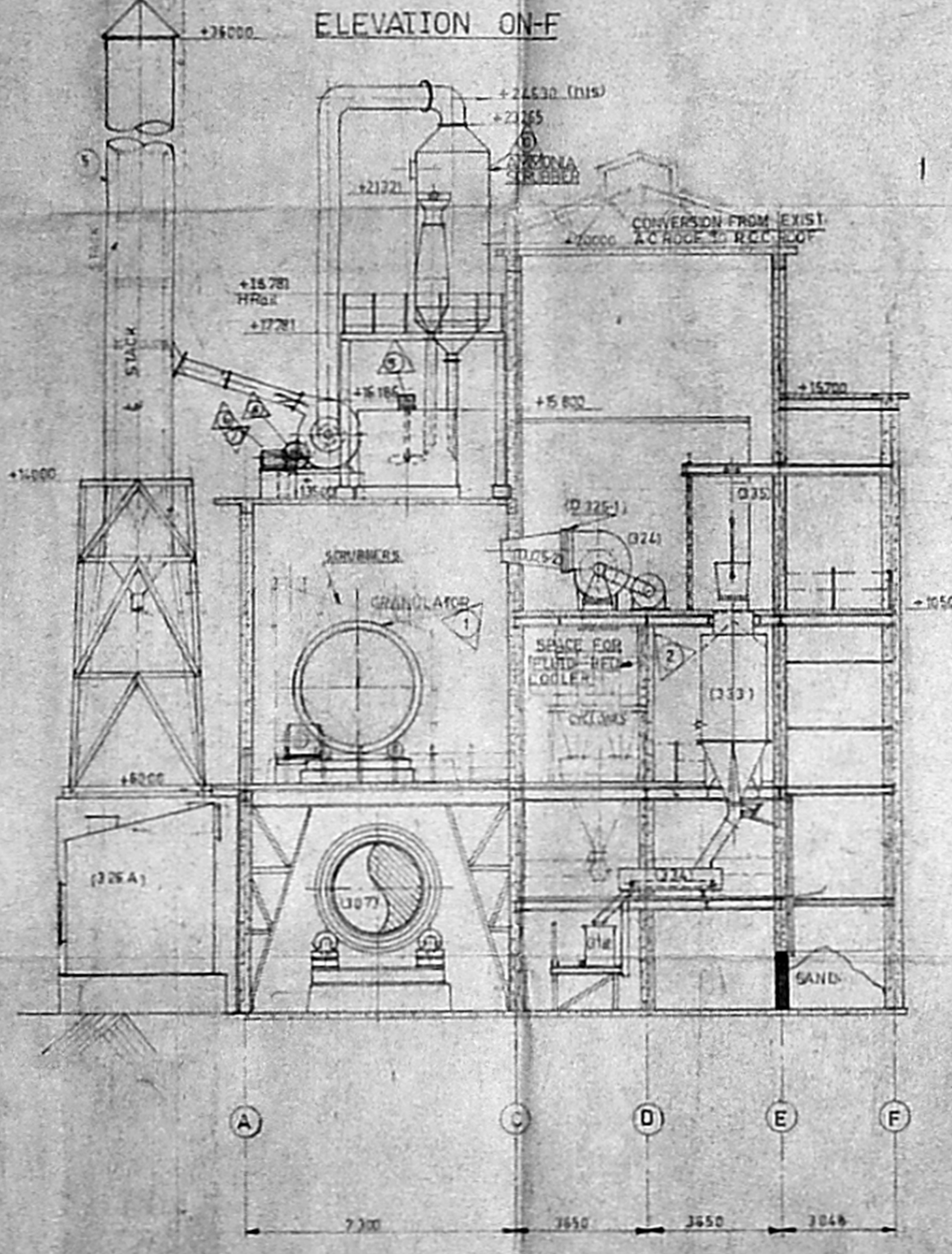
ELEVATION ON-E



ELEVATION ON-D



ELEVATION ON-F

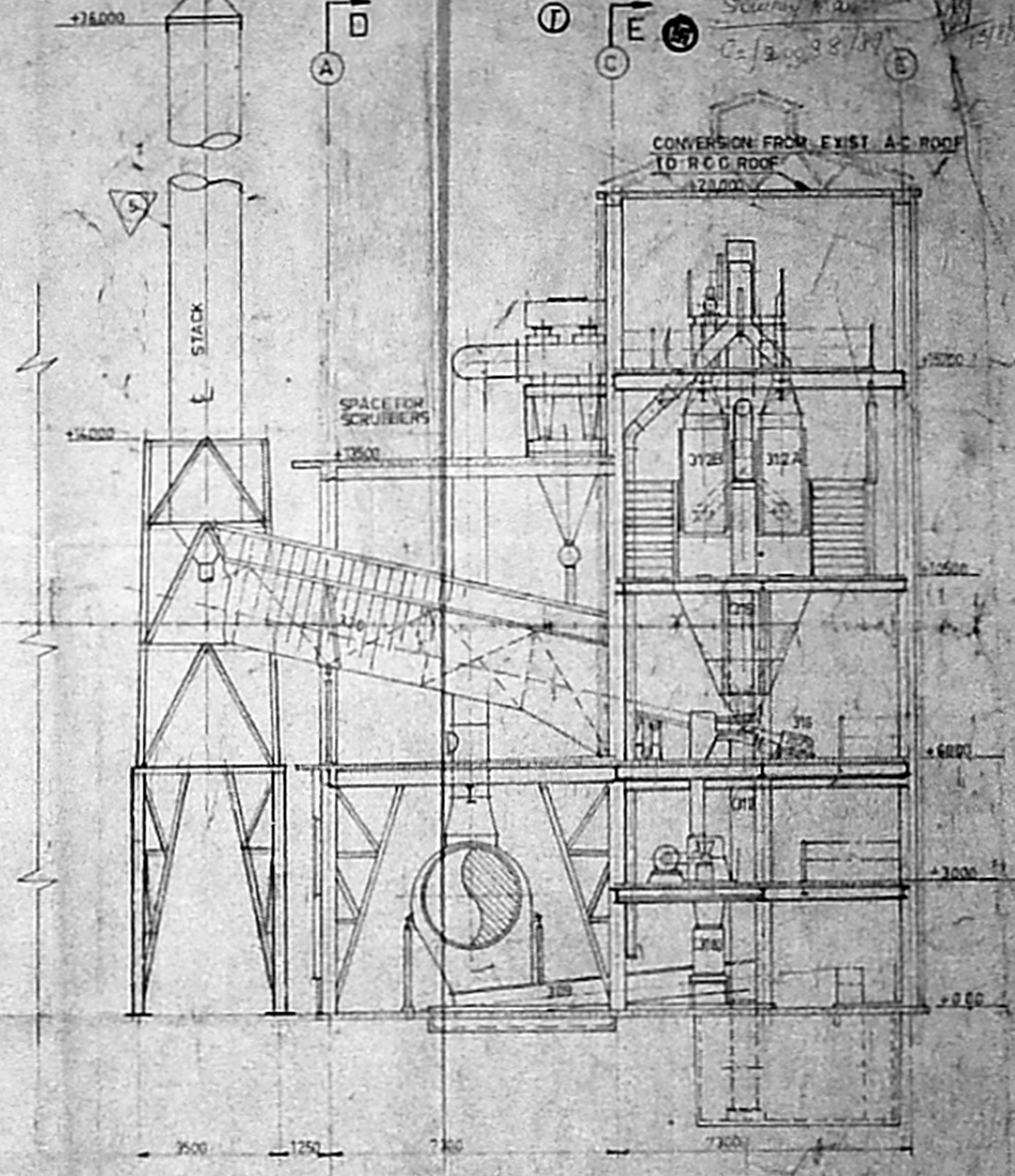


SECTION ON-B

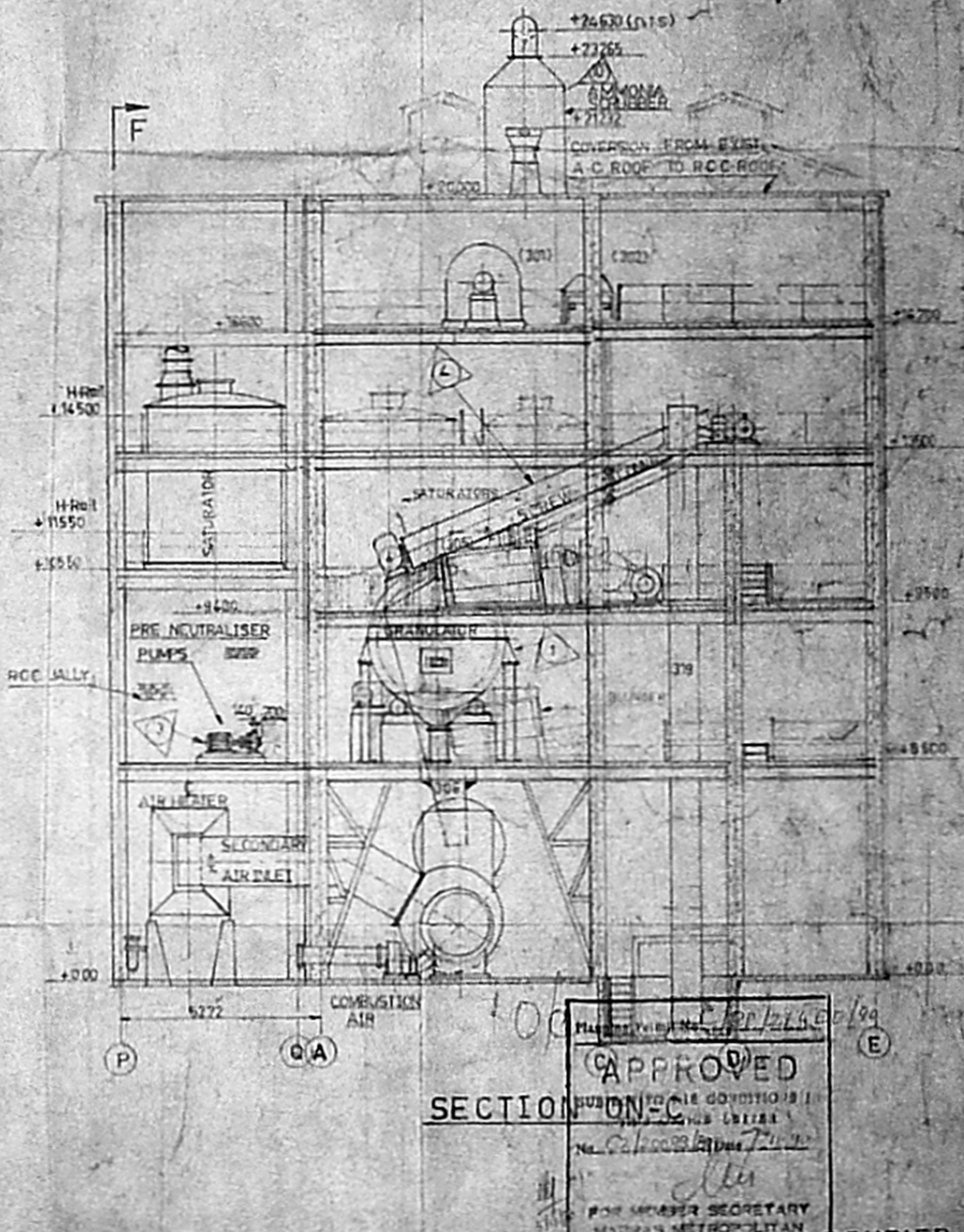
AC SHEET SIDE CLADDING ALREADY EXISTING SHOWN THIS  
 PROPOSED EXTENSION SHOWN THIS  
 PROPOSED INSTALLATION SHOWN THIS  
 EQUIPMENT TO BE RELOCATED SHOWN THIS  
 EQUIPMENT TO BE REMOVED SHOWN THIS  
 REMOVAL OF EXIST. AC ROOF SHOWN THIS  
 RECA. EXISTING EXTENSION - 94.50 MTS

NOTE: THIS DRAWING IS TO BE READ IN CONJUNCTION WITH DRG No. ENN 1124/87.

NO.	DESCRIPTION	NO. OF MOTORS	HP	FACTORY HP
1	DRUM GRANULATOR	1	120	120
2	FLUID BED COOLER	1	75	150
3	PRE NEUTRALISER PUMPS	2	25	25
4	SCREEN CONVEYOR	1	15	15
5	STACK	1	15	15
6	VENTURI SPRAY PUMP	2	25	15
7	CYCLONE SPRAY PUMP	2	25	50
8	F.F. FAN MOTOR	1	60	41
9	RECYCLE AIR FAN MOTOR	1	2	2
10	AMMONIA SCRUBBER	1	2	2



SECTION ON-C



SECTION ON-E

APPROVED  
 SECTION ON-C  
 FOR MEMBER SECRETARY  
 MADRAS METROPOLITAN  
 DEVELOPMENT AUTHORITY  
 MADRAS - 600 006  
 OCCUPIER  
 EID. PARRY (INDIA) LTD.

R. Madhavan  
 R. MADHAVAN, L.C.C.  
 LICENSED SURVEYOR,  
 MADRAS METROPOLITAN  
 DEVELOPMENT AUTHORITY,  
 MADRAS - 600 006

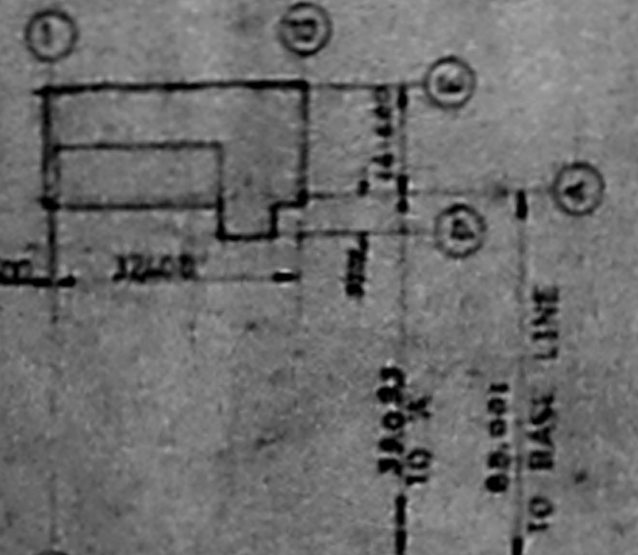
DATE	NAME	REVISION

ALL DIMENSIONS ARE IN MM.

DATE: 11/26/87

SCALE: 1:100

REVISION: REVISED ARRANGEMENT OF CCF PLANT



TO BASK LINE